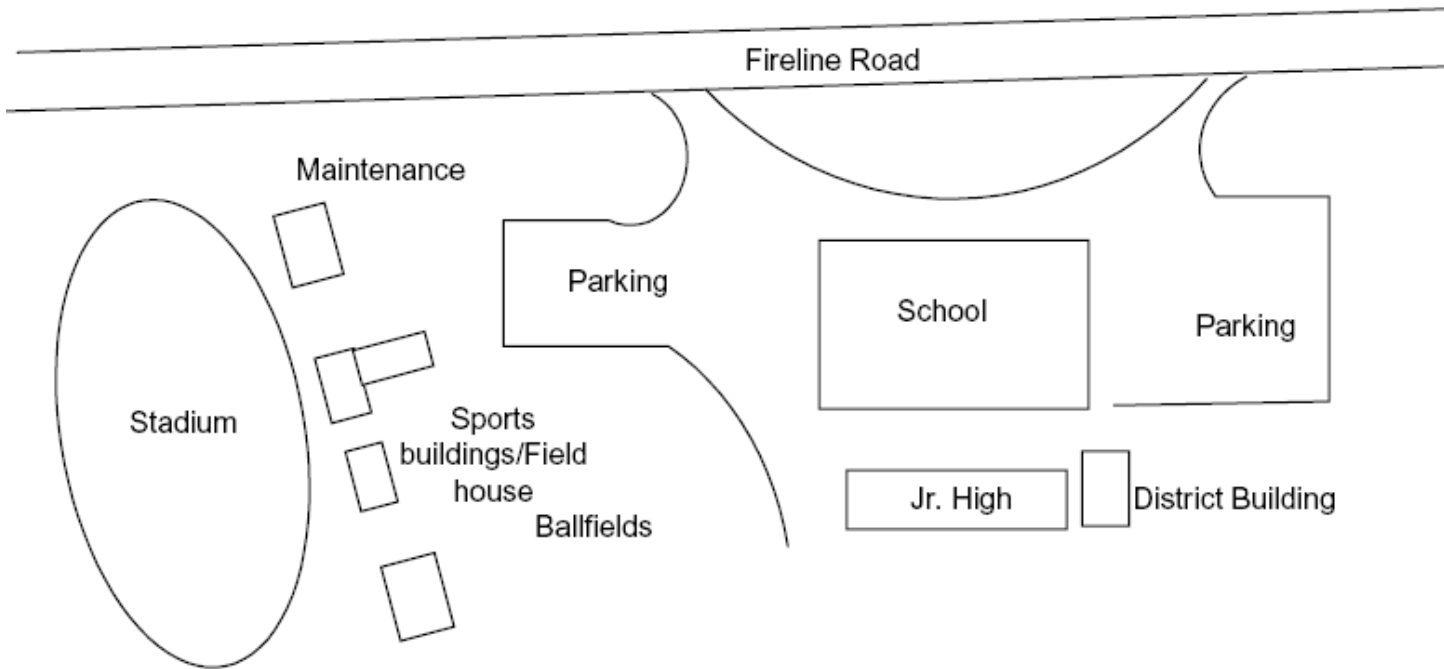
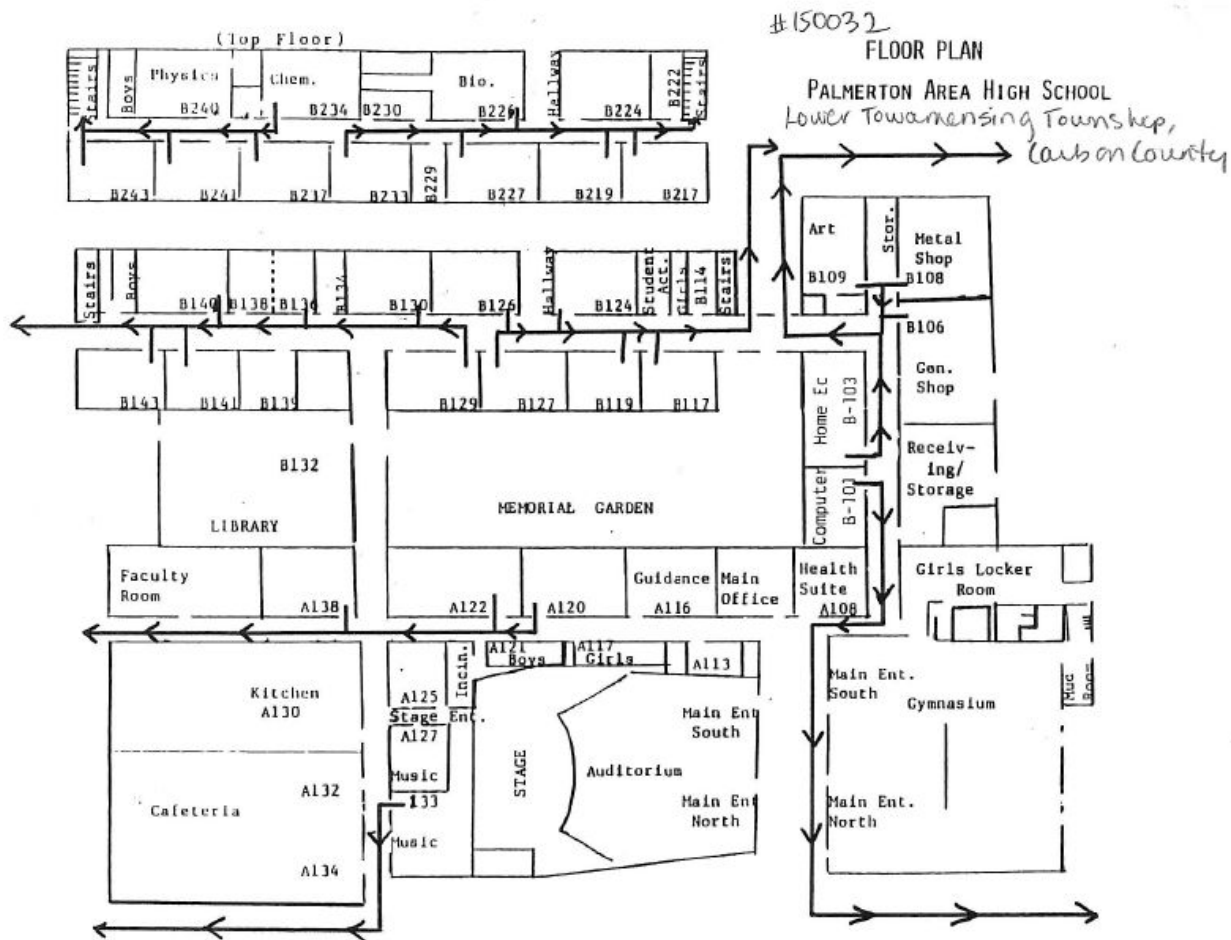


150032 – Palmerton Area High School





Site Plan of Palmerton Area High School



First Floor Plan of Palmerton Area High

150032; Palmerton Area High School. This school is located at 3525 Fireline Road, Palmerton, Pennsylvania, in Lower Towamensing Township, Carbon County. It is part of the Palmerton Area School District. The 1964 school is set back from Fireline Road behind a circular driveway surrounding a grassy island with a school sign. A strip of parking is located along the driveway, in front of the school. Large paved parking lots are located on the east and west sides of the building. The eastern lot was expanded in 1987. A small lot is located up against the west side of the school. School fields, athletic buildings, and maintenance buildings are located on the west side of the school, beyond the west parking lot. These include a stadium with football and track facilities, a bleachers building with an attached one-story concrete-block gabled building for the wrestling team, and stadium lights, a one-story gabled field house constructed in 2006, a baseball field and an open practice field, and multiple one-story gabled concrete-block maintenance buildings for storage and vehicular use. A two-story junior high school building is located south of the high school, appended to the high school by a two-story hallway. Designed and constructed to reflect the original school on the property, the junior high is not considered an addition to the high school, functioning completely separately. In an open courtyard between the two schools is a satellite dish. At the end of the courtyard, located at the southeast corner of the high school is a modern Palmerton Area School District Administration building. The one-story building is also designed to reflect the original school. The property is surrounded by rocky, tree-lined hills.

The rectangular school is arranged along interior hallways surrounding an interior courtyard. The gymnasium, auditorium, and cafeteria are all located along the front, north, side of the school. A two-story classroom wing with interior linear hallways is located on the south side. The one-to-two-story steel structure has brick and porcelain enameled steel curtain walls. The gymnasium wall, facing Fireline Road, has some decorative brickwork. The building sits on a concrete foundation. Rubber membrane covers the mix of flat and slightly pitched gabled roofs on the building. The building has two interior brick chimneys. The main entrance contains four sets of aluminum-frame glass double doors surrounded by fixed windows. A one-story flat-roof metal portico shelters the entrance and extends partially down the walkway in front of the building. The school is lit by a mix of metal picture and awning windows. A ca. 1987 expansion of the cafeteria and library, and addition of a faculty room are located on the east side of the school. A ca. 1990 one-story frame modular classroom used as a computer lab is located at the rear of the high school.

The large main lobby features terrazzo floor tiles, acoustic ceiling tiles, fluorescent lights, brick walls, wood display cases, and wood paneled walls, mailboxes, and public phones near the main office at its southern end. Hallways feature a mix of plaster and painted wood paneled walls, fluorescent lights and skylights, inset display units, terrazzo floor tiles, lockers, water fountains with decorative tile backsplashes, and multiple types of classroom doors. The school also features a working dumb waiter and an original system to move wheelchairs up and down a flight of stairs. The auditorium features carpeting and floor tiles, a ceiling sprayed with acoustic material, concrete-block walls with acoustic panels, fluorescent lights, original seating, a proscenium stage and a

lighting box. The gymnasium features wood floors, a metal truss ceiling, concrete-block walls, suspended basketball hoops, rollaway bleachers, and a folding room divider. The cafeteria features terrazzo floor tiles, acoustic ceiling tiles, fluorescent lights, ceiling fans, ceramic tiled walls, and folding tables and chairs. The interior of the cafeteria and kitchen were altered in 1987. The library features carpeting, acoustic ceiling tiles, fluorescent lights, plaster walls, wood shelving and wood tables and chairs. One wall is designed in a repeating hexagon pattern. Specialized classrooms include, or have included, a planetarium removed completely in 1987, home economics rooms (sewing room converted to computer lab), wood shop, metal shop (converted to cinematography classroom), dark room, and art room.

Palmerton Area High School was constructed in 1964 by the Palmerton Area School District on farmland on the outskirts of the borough. Formed in 1959, the Palmerton Area School District decided to build a new district high school due to continued growth in the student population in the district community. By the late 1950s, the high school opened in 1925 by Palmerton Borough, S.S. Palmer High School, could not accommodate the student population. S.S. Palmer became a middle school when Palmerton Area High School was completed. Circa 1987, rooms were expanded and added to the high school, and some interior spaces were altered. In 1987, Palmerton Area Junior High School was appended to the rear of the high school, and an administration building for the school district was built on the site as well.

(Terry Heiney, Head Custodian, pers. com., February 23, 2007) and multiple staff members.

Historical information provided by Palmerton Area High School.

United States Department of Agriculture

1969 Aerial Photograph AQT-1KK-54. Created on October 4, 1969. On file at the Pennsylvania Geological Survey Library, Middletown, Pennsylvania.

United States Geological Survey

1999 *Palmerton SW, PA Aerial Photograph*. USGS Reference Number a 40075-G5-04-PHT. Created on April 13, 1999.

1999 *Palmerton, PA Quadrangle*. Topography compiled 1951. Planimetry b derived from imagery taken 1982 and other sources. Photoinspected using imagery dated 1997. Survey control current as of 1960. Boundaries, other than corporate, revised 1999. Denver, CO.



Aerial View of Palmerton Area High

More Photos of Palmerton Area High

